

Compact-Y EXP Range TXAEY 117÷133

Cooling capacity: 17.4÷34 kW - Heating capacity: 17.9÷39.1 kW



EXP SYSTEMS
Excellence in Polyvalent technology



EXPsystems - Polyvalent ecological air-cooled system with axial fans. Range with hermetic Scroll compressors and R410A refrigerant gas.

Construction features

- Compressor: hermetic, rotary Scroll compressor, complete with thermal protection and crankcase heater.
- Main and secondary heat exchanger: adequately insulated stainless steel plate exchanger, complete with antifreeze heater and water flow differential pressure switch.
- Air side heat exchanger: finned coil exchanger with copper pipes and aluminium fins.
- Fan: electric axial fans with external rotor, equipped with internal thermal protection, protection grilles and proportional electronic device for continuous fan rotation speed regulation.
- Control: microprocessor electronic control, iDRHOSS compatible, with Adaptive Function logic.
- Structure: in galvanised and painted sheet steel, complete with condensation drain pan.

Models

- TXAEY: standard EXPsystems unit.

STANDARD unit (for mod. 133 only)

- Without pumping group and buffer tank.

PUMP unit

- Pumping group for main circuit complete with: circulation pump, expansion tank with membrane, manual bleed valve and safety valve, pressure gauge.

TANK&PUMP unit (for mod. 133 only)

- Pumping group for main circuit only complete with: water buffer tank, circulation pump, expansion tank with membrane, manual air bleed valve, automatic air bleed valve and safety valve, pressure gauge.

FACTORY FITTED ACCESSORIES

- Silenced configuration.
- Antifreeze electric heater on the buffer tank.
- Unit base antifreeze electric heater for operation in heat pump mode at low external air temperatures (mod.117-130).
- Protection coil grilles.
- Single pump with increased head pressure (mod. 133).
- Single pump with increased head pressure + buffer (mod. 133)
- Digital input for double set-point
- 4-20 mA analogue input for shifting set-point.

ACCESSORIES SUPPLIED LOOSE

- Protection coil grilles
- Antivibration rubber mountings.
- Water filter
- Remote keyboard with display.
- Clock card
- Serial interfaces for connection to BMS (proprietary protocol, Modbus RTU, LonWorks).
- Serial converters (RS485/RS232, RS485/USB) in the case of centralised unit management.
- Serial interface (CAN-bus - Controller Area Network) for the iDRHOSS system.
- GSM 900/1800 modem kit for remote unit management.
- RHOSS supervision software for unit monitoring and remote management.



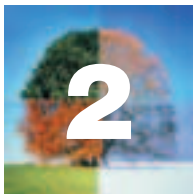
TXAEY MODEL		117	124	130	133
❶ Nominal cooling capacity (AUTOMATIC 1)	kW	17,4	23,6	28,6	34,0
❷ Recovery heating capacity (AUTOMATIC 2)	kW	20,8	30,4	37,2	44,2
❸ Nominal heating capacity (SELECT 1-2 AUTOMATIC 3)	kW	17,9	26,1	34,4	39,1
❶ Absorbed power (*) (AUTOMATIC 1)	kW	6,4	9,4	11,7	13,3
❷ Absorbed power (*) (AUTOMATIC 2)	kW	4,9	7,4	9,8	11,5
❸ Absorbed power (*) (SELECT 1-2 AUTOMATIC 3)	kW	6,1	8,9	11,1	13,3
❹ C.O.P. (AUTOMATIC 2)		6,62	6,72	6,13	6,25
❺ Sound pressure level	dB(A)	50	52	53	54
❻ Silenced version sound pressure level	dB(A)	46	49	50	51
Scroll/step compressor	No.	1/1	1/1	1/1	1/1
Circuits	No.	1	1	1	1
Water tank content	l	-	-	-	80
❶ Available head pressure of standard pump	kPa	130	131	110	134
Main supply	V-ph-Hz	400-3+N-50	400-3+N-50	400-3+N-50	400-3+N-50
DIMENSIONS AND WEIGHTS		117	124	130	133
W - Width	mm	1.522	1.522	1.822	1.660
H - Height	mm	1.090	1.280	1.510	1.570
D - Depth	mm	580	600	695	1.000
Weight TXAEY	kg	220	280	370	470

In the following conditions:

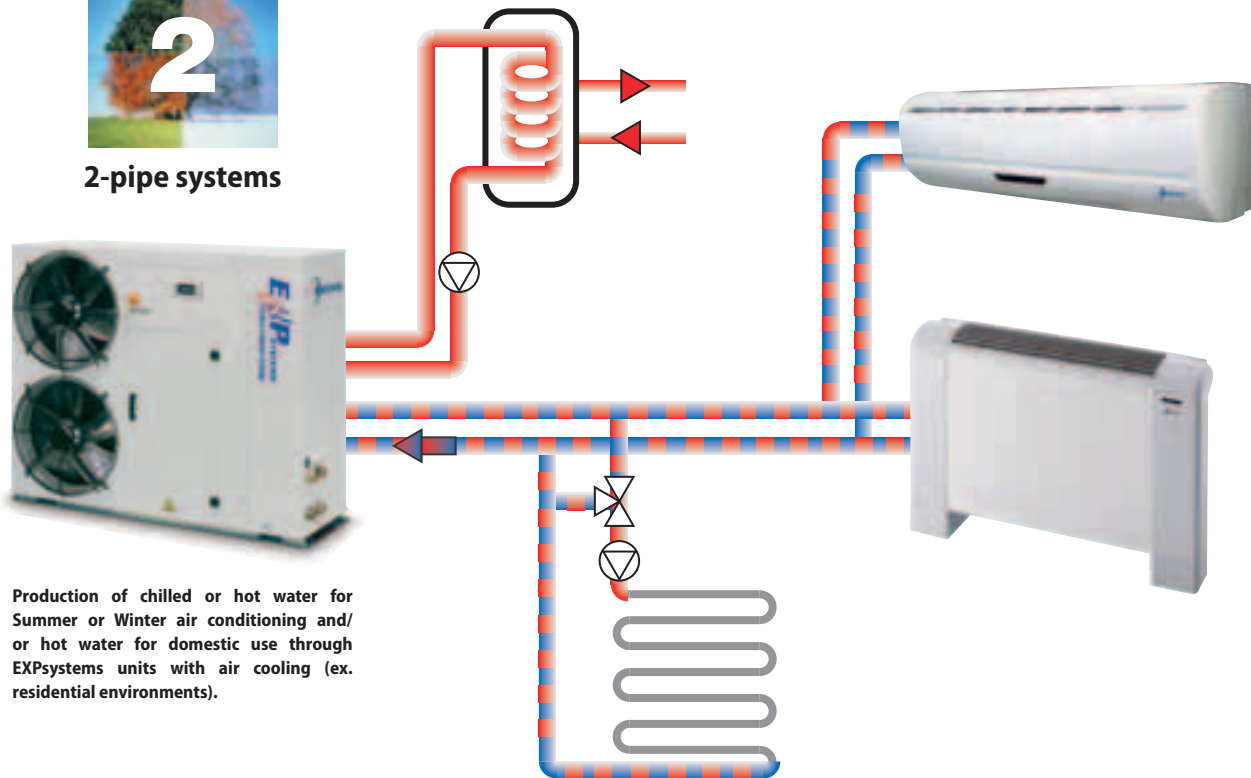
- ❶ Air: 35°C - Water: 7/12°C.
- ❷ Air: 7°C D.B. - 6°C W.B. - Water: 40/45°C.

❸ At 5 m from the unit in free field (Q = 2).

- ❹ Evaporator water: 7/12°C. Recovery outlet water 45°C - Nominal flow.
- (*) Unit without pump.



2-pipe systems



Production of chilled or hot water for Summer or Winter air conditioning and/or hot water for domestic use through EXPsystems units with air cooling (ex. residential environments).

WATER CHILLERS
HEAT PUMPS
AIR cooled
AXIAL fans

WATER CHILLERS
HEAT PUMPS
AIR cooled
CENTRIFUGAL fans

WATER CHILLERS
HEAT PUMPS
WATER cooled
CONDENSERLESS UNITS

INDUSTRIAL &
PROCESS COOLING

EXP
Polyvalent systems

CONDENSING UNITS

SYSTEM ACCESSORIES

FAN COIL UNITS

TERMINAL UNITS